



TOWN OF VIEW ROYAL  
Engineering Department  
45 View Royal Avenue  
Victoria, BC V9B 1A6  
Phone: (250) 479-6800  
Email: [engineering@viewroyal.ca](mailto:engineering@viewroyal.ca)  
Website: [www.viewroyal.ca](http://www.viewroyal.ca)

# TRAFFIC ADVISORY

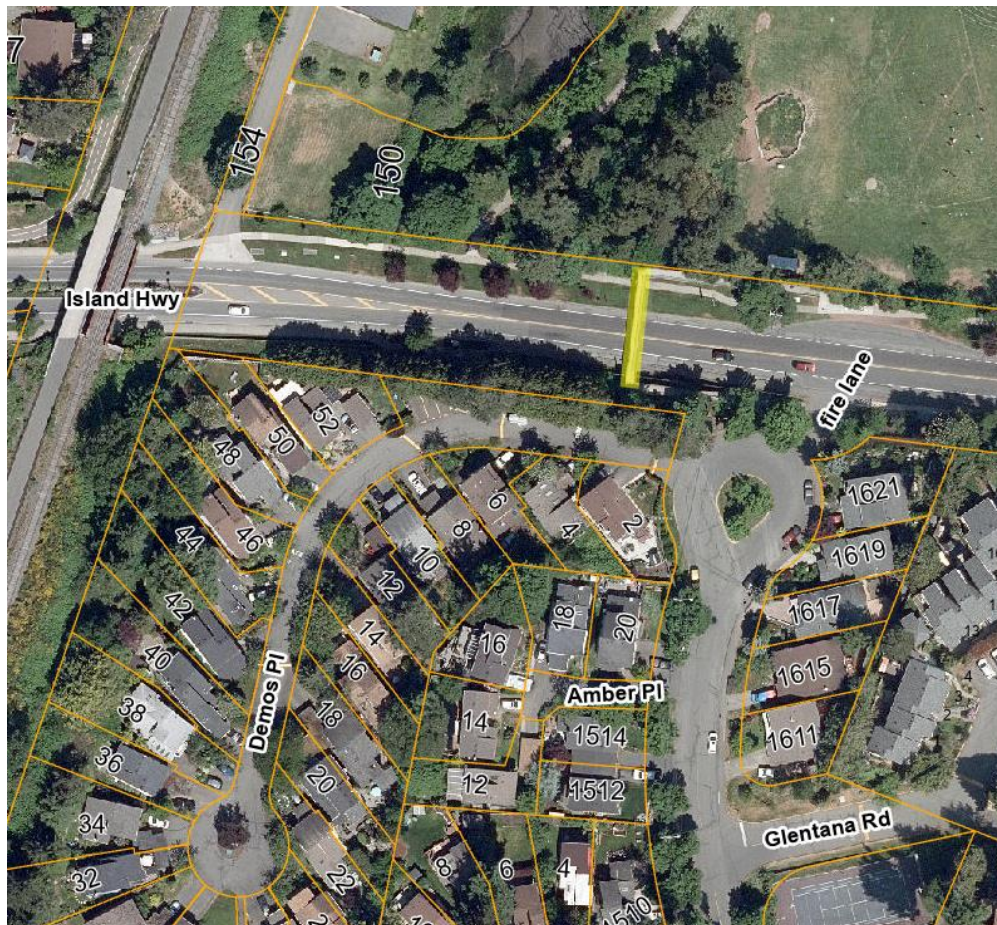
December 18, 2025

## NOTICE OF MAINTENANCE WORK ON PEDESTRIAN SHORELINE OVERPASS

Please be advised that the Town will be undertaking maintenance work on the pedestrian Shoreline overpass on **Thursday, December 18, 2025**. The work will be completed by private contractors working on behalf of the Town.

**Expect delays as flaggers direct single lane, alternating traffic through the work zone.**  
We ask that you lower your speed and use caution when travelling through the work zone.

If you have questions or concerns regarding the above, please contact the Town's Engineering Department at 250-708-2258 or [engineering@viewroyal.ca](mailto:engineering@viewroyal.ca)



## 4 Mile Trestle from Shoreline Drive

